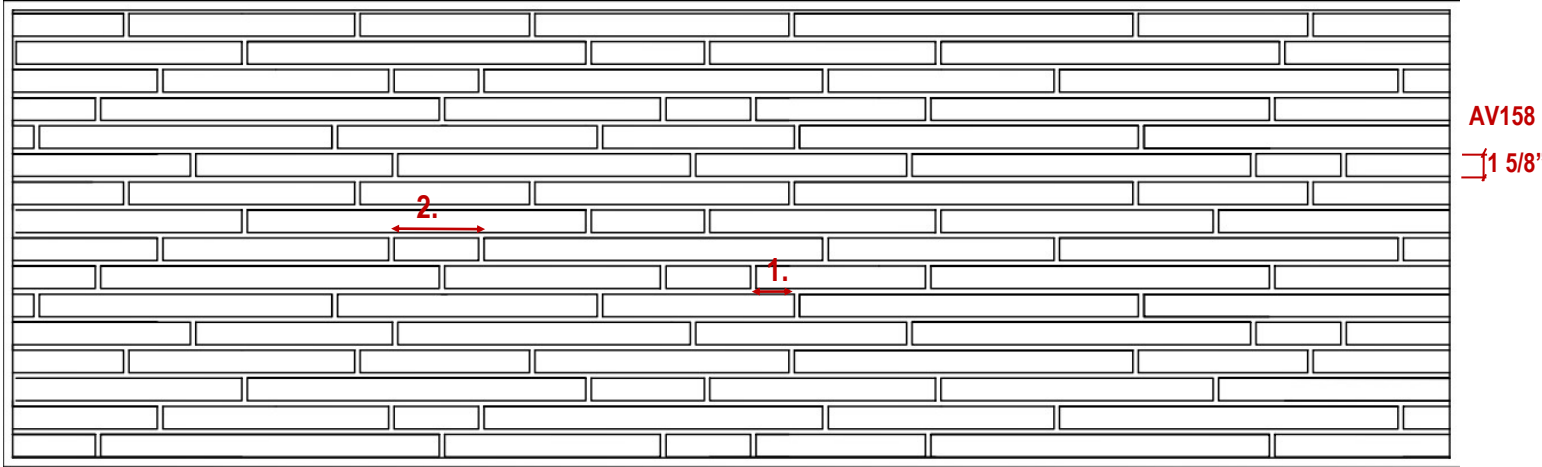


Avanti Brick

Typical Elevation • Random Length Coursed Bond • 3/8" Mortar Joints



Guidelines for Installation:

1. Minimum 4" overlap of vertical joints.
2. Minimum length of 4".
3. To maintain consistency of appearance in the wall, mix shorter units from skid with longer units.
4. Units are naturally fractured to shorter lengths on the skid, in some cases it may require the mason to clean up the edge.
5. Guillotine split ends are acceptable for random units.

Avoid:

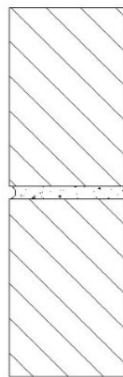
- Vertically Stacking Head Joints or putting Head Joints too close together at alternative courses.

Size	Pieces* per	Nominal Length
AV158	96	24"

*One Piece is based on a 23-5/8" length and may be comprised of 2 or more individual stones.

General Installation Guidelines

- Arriscraft recommends the use of a Portland cement-lime mortar, proportioned to a 1:1:6 ratio.
- Masonry units should be laid with full head and bed joints except where they are used for weep holes or ventilation.
- Bevel mortar from rear face to prevent protrusion into cavity.
- Prevent excessive mortar droppings by cutting off excess mortar with trowel as the units are laid.
- Butter head joints of unit being placed in wall.
- Place unit to tightly compress mortar.
- Do not re-adjust unit once it has been set in place.
- Tool joints when mortar is thumbprint hard. This timing will depend on the mortar properties and weather conditions.
- Tool joints to a tightly compressed surface to achieve the most weather resistance. Concave tooled joints provide the best resistance to moisture penetration.
- After tooling, any excess mortar and dust should be brushed from the masonry surface using a soft bristle brush. Avoid rubbing or pressing the mortar into the units.
- Refer to additional guidelines in the Arriscraft [Care, Cleaning, and Maintenance](#) document.



CONCAVE



RECESSED

FEB 2023