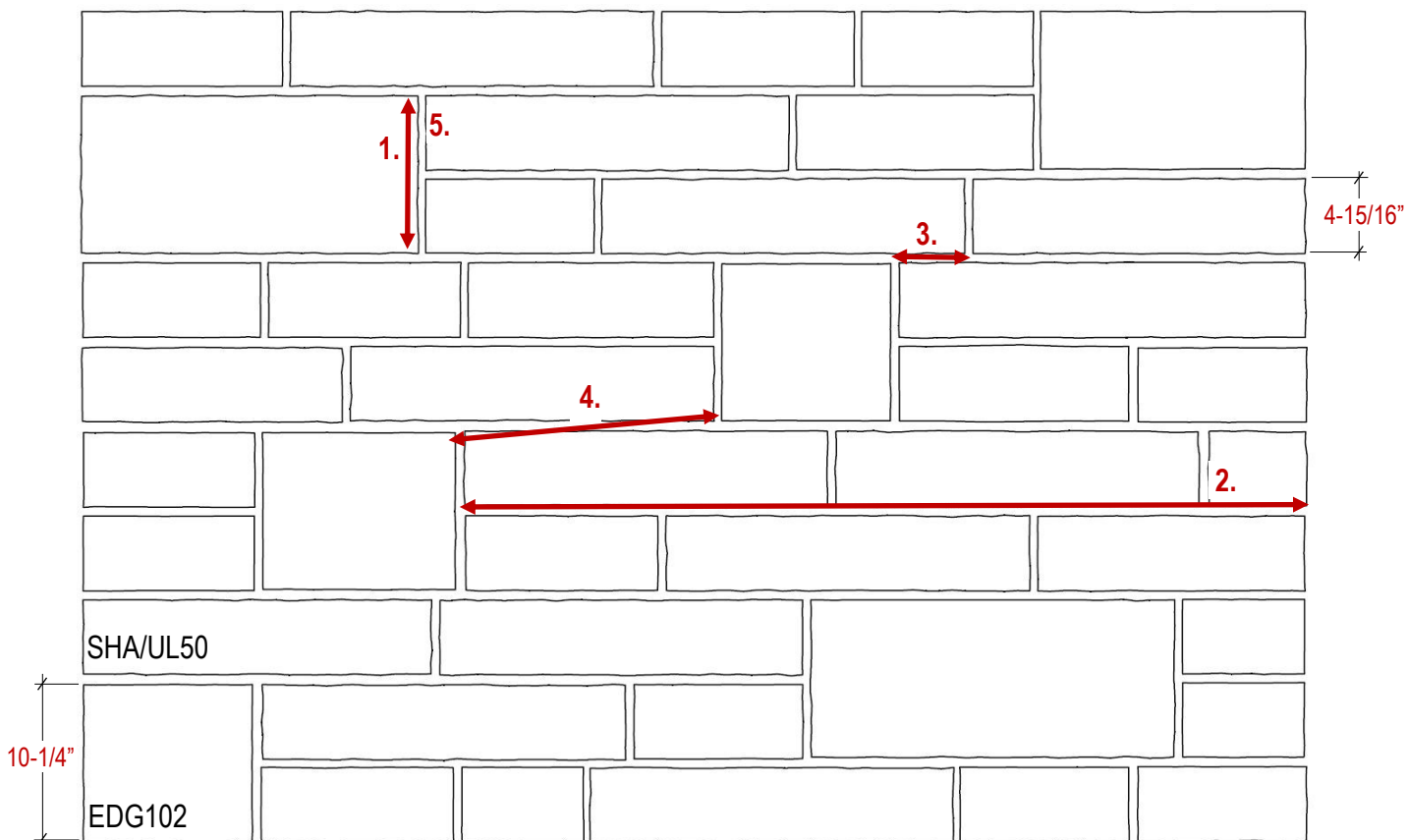


# Edge Rock Building Stone

Typical Elevation • 75:25 Bond • 3/8" Mortar Joints



## Guidelines for Installation:

1. Two SHA/UL50 units load on top of each other will bond with one EDG102.
2. Maintain a maximum 5—6 foot horizontal joint length depending on wall dimensions.
3. Minimum 4" overlap of vertical joints.
4. EDG102 units must not touch one another. To maintain the standard ratio of sizes in the wall, EDG102 units should be placed approximately 1.5 feet apart.

## Avoid:

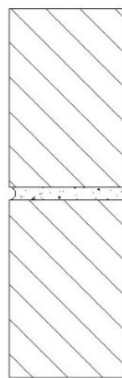
1. Creating box patterns in the wall.

Size	Pieces* per 32 sq.ft.	Nominal Length of one piece
SHA/UL50	20	32"
EDG102	4	24"

\*One piece is based on a 23-5/8" length and may be comprised of 2 or more individual stones. For SHA/UL50, one piece is based on a 31-5/8" length.

# General Installation Guidelines

- Arriscraft recommends the use of a Portland cement-lime mortar, proportioned to a 1:1:6 ratio.
- Masonry units should be laid with full head and bed joints except where they are used for weep holes or ventilation.
- Bevel mortar from rear face to prevent protrusion into cavity.
- Prevent excessive mortar droppings by cutting off excess mortar with trowel as the units are laid.
- Butter head joints of unit being placed in wall.
- Place unit to tightly compress mortar.
- Do not re-adjust unit once it has been set in place.
- Tool joints when mortar is thumbprint hard. This timing will depend on the mortar properties and weather conditions.
- Tool joints to a tightly compressed surface to achieve the most weather resistance. Concave tooled joints provide the best resistance to moisture penetration.
- After tooling, any excess mortar and dust should be brushed from the masonry surface using a soft bristle brush. Avoid rubbing or pressing the mortar into the units.
- Refer to additional guidelines on the BASIC CARE sheet.



Concave



Recessed

August 2019