

# At-Grade Design Ideas

The appearance of masonry rising directly from grade can be a desirable design element for many designers. At Arriscraft, we value both masonry beauty and integrity for the life of your building.

Learn how to maintain aesthetics and durability by employing common sense precautions to effectively prevent moisture from adjacent elements wicking into the masonry at grade.



*Simply stone.™*



P.O. Box 3190, 875 Speedsville Road  
Cambridge, Ontario, Canada N3H 4S8

1-800-265-8123  
solutions@arriscraft.com

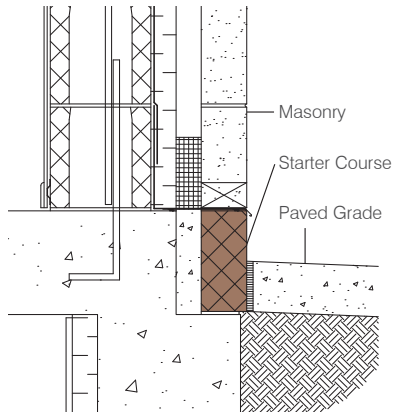
[www.arriscraft.com](http://www.arriscraft.com)

**Arriscraft**   
Building Stone · Brick · Limestone

# At-Grade Design Ideas to Maintain Aesthetics and Performance

## Incorporate a Starter Course

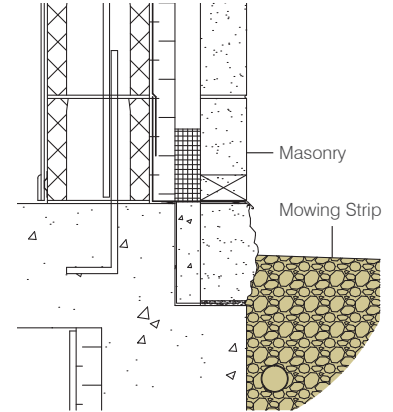
Installing a starter course of Adair® dolomite, or Regency Stone – a specially formulated high-density, severe weathering concrete unit, will maintain the aesthetic integrity of the masonry. With their greater density and lower absorption, these products are ideally suited to resist the conditions at grade.



Adair® Limestone starter course

## Incorporate a Mowing Strip

Incorporating a mowing strip of clear draining granular material will protect against moisture accumulation by allowing a clear path for moisture drainage away from the masonry.

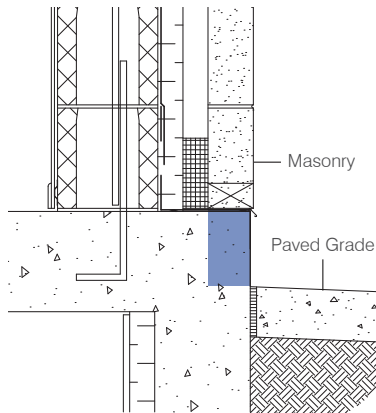


Mowing strip application

## Raise Masonry Above Grade

Above Grade

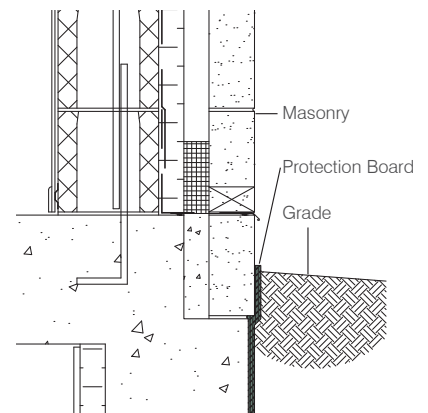
Raising the masonry above grade will prevent moisture sources from coming into direct contact with the masonry.



Masonry raised above grade

## Protect Masonry with Moisture-impervious Protection Board

Incorporating a protection board that is moisture-impervious will protect the masonry from saturation. This method is virtually invisible.



Moisture-impervious material